



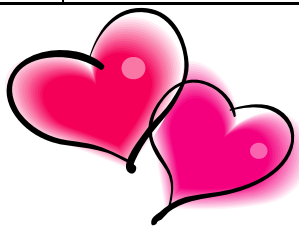
FEBRUARY 2012

THE BOBCAT

A PUBLICATION OF THE WEST JEFF ELEMENTARY PTA

UPCOMING EVENTS

Jan 31	CDM, 4:00pm
Feb 6-10	Val-O-Gram Sales
Feb 7	Science Projects Due, 9:00am
Feb 8	Science Fair Viewing, 9am-5pm
Feb 10	Movie Night, 6:00pm
Feb 14	Valentine Class Parties, 2:30pm
Feb 17	No School
Feb 20	No School, Presidents Day
Feb 22	PTA Meeting, 3:45pm
Feb 29	Early Release, 1:05pm
Mar 6	CDM/PTA, 4:00pm
Mar 9	Movie Night, 6:00pm
Mar 14	Arts in March, 6:00-8:00pm
Mar 21-22	Parent-Teacher Conferences
Mar 26– Apr 2	Spring Break, No School



West Jeff Elementary School
26501 Barkley Road
Conifer, Colorado 80433
303.982.2975
www.wjepta.org

YOUNG AMERITOWNE

Mr. Bahlmann's 5th Grade students and Ms. Lambert's & Ms. Andres' 4th Grade students enjoyed their adventure at AmeriTowne. They spent the day learning about different jobs in the community and playing out their specific roles.



WJE Movie Night
 Friday, February 10th, 6:00pm
 Smurfs (rated PG)



Bring your family and friends to Movie Night at WJE in the lunch room. Movie starts at 6:30pm.

\$2.00 for the movie, \$1.00 for hotdogs, \$0.75 for soda, popcorn (2 free refills) and other fun snacks. Remember to bring your own chairs, pillows & blankets (and small bills to pay if possible, we'd really appreciate it).

PRINCIPAL CORNER

Dear West Jeff Families,

So far we have had a great year! January was full of great activities and it was wonderful to see students so excited about school and learning. With Young Ameritowne for 4th and 5th graders, the Spelling Bee for 3rd, 4th, and 5th graders, and our Science Fair Workshop for everyone, we saw so many students motivated to learn! Thanks to everyone who supported these activities and made West Jeff a fun place to be.

As we move into February, we want to keep our excitement level high. Winners from our school level Spelling Bee move on to the Area Spelling Bee on February 9th. Our 3rd graders have another opportunity to shine during the Reading TCAP (formerly known as CSAP). They take their first tests on February 22nd and 23rd. They are only doing reading in February, but all of our 3rd-5th students start testing in March on Reading, Writing, Math and Science (5th grade only). More information will be sent home in the next couple of weeks to give you information on how to make sure your child is ready to shine when testing starts.

Our Movie Night in January was spectacular. Thanks to the families who were able to attend. Our Student Leadership kids did a great job of modeling Bobcat behavior. It was a fun and safe night and we are looking forward to the next Movie Night on February 10th.

Our Valentine's Day parties are on Tuesday, February 14th. Please see your classroom teacher or room parent for more information about how to help at the party or what to send with your child.

Thanks to everyone for your continued support of West Jefferson Elementary. If you ever have any questions, concerns, or just want to discuss something, please feel free to stop by or make an appointment with Kristie in the office.

Warmly,

Wendy Woodland
Principal-West Jeff Elementary

Upcoming Meetings:

CDM Meeting
Tuesday, January 31st
4:00pm

PTA Meeting
Wednesday, February 22nd
4:00pm

Both meetings will be in the library. Please mark your calendar and plan to join us. Your opinion matters.

Growing up and Moving on

All of the PTA board positions will be up for nomination in February for the 2012-2013 school year as our students grow up and move on. Parents & Staff interested in joining the PTA board should contact Kelli Silvernale at 303.816.9619.

CSAP / TCAP Testing Dates

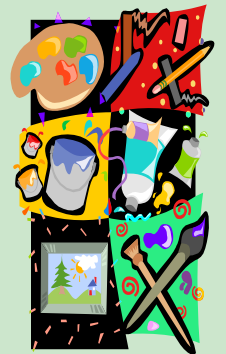
3rd Grade Reading	February 22 nd -23 rd
3rd-4th-5th Grade	March 5 th -16 th



**ARTS IN MARCH!
WEDNESDAY, MARCH 14, 6-8PM**

On Wednesday, March 14, West Jeff Elementary will hold our 3rd Annual Arts in March where the West Jeff community can enjoy one-of-a-kind artwork on display from all WJE students, refreshments, poetry reading by students, music by band students, and a sculpture workshop where students can make pieces from recycled materials. Please plan to attend this unique event.

If you have questions or are available to volunteer some time to help prepare for this event, please contact Michael Wisniewski, WJE Art Department by voicemail 303.982.5167 or email mwisniew@jeffco.k12.co.us



ANNUAL KINDERGARTEN RODEO

Howdy folks,

Kindergarten cowboys & cowgirls, along with Ms. Deckers 3rd grade class (Beabout's Buddies), participated in our annual Kindergarten Rodeo on Friday, January 20th!! What a swell time we all had!!! Some of the many events that took place were: Barrel racing, Pole bending, Key hole, Calf roping, Traditional horse racing, Ribbon racing, Trail class and the always popular Grub table!!!

Thank you so much for our wonderful parents who helped us with the various events and for also contributing the very yummy grub!!!

Love ya all and thanks again,
Alicia Beabout and Jackie Gardner



3RD GRADE CLASSROOMS

One of the latest and greatest advancements in classroom teaching is the opportunity to use audio enhancements. These great little devices consist of a microphone that a teacher or student can hook onto a pocket or collar and a small speaker located in the room. As a teacher or student talks, their voice is amplified and projected to all parts of the room. Research has shown that much of what a teacher says when his or her back is turned to the class as they write on the whiteboard, is actually lost to the class. With the audio enhancement, it's much easier to understand and hear the speaker. While not cheap, we're lucky to have several of these components at our school. Currently, both third grades are using them daily. As more funds become available, we're hoping to purchase one for every classroom.

WJE Community Service News Val-O-Gram Sales

The Student Leadership committee will be selling Val-O-Grams the week of February 6-10, during the lunch hour. They are available to purchase for \$1.00 each and there are three styles to choose from.



Val-O-Grams will be delivered to students and staff on **Valentines Day**, Tuesday, February 14th.



If you would like to help student leadership with selling Val-O-Grams that week from 11:30-1:15pm, during lunch, or have any questions please contact Marcy Feagans at 303.816.2191 or email

feagans@ecentral.com.

If you would like to purchase a Val-O-Gram for a student or staff member, please complete the form below and return with money payable to WJE PTA:



I would like to purchase a Val-O-Gram:

- Style #1 Valentine Pencil & Tattoo
- Style #2 Valentine Pencil & Heart Sucker
- Style #3 Valentine Pencil & Silly Band

From	To	Style #
_____	_____	_____
_____	_____	_____
_____	_____	_____
_____	_____	_____

Total # of Val-O-Grams ____ @ 1.00 each

Total Amount Due \$ _____

**Crossroads
School of Music**
Marshdale

Guitar – Drums
Music lessons for
the young musician
303-810-1828

**WJE SCIENCE FAIR
THERE'S STILL TIME!**



Thank you **Dr. Carol Turner, Dr. Scot Morris, and Jen Clark** for your support and enthusiasm of the science workshop at WJE!

Important dates:

Fri, Jan 27 Registration Forms Due

Tue, Feb 7 Projects Due at School
Judging starts at noon!

Wed, Feb 8 Science Fair Viewing, 9am-5pm

If you can help or you need additional information, please contact Jen Clark at 303.500.2384 or email dandyions2005@yahoo.com

**WANT TO SEE MORE OF YOUR
STUDENT IN THE YEARBOOK?
SUBMIT PICTURES!**



You may leave hard copy pictures or pictures on CD's or memory sticks at the WJE office. (Please make sure to include your name and your child's name and grade so they may be returned to you.)

You may also upload pictures from your computer by going to the link on the WJEPTA.org website or using the URL : <http://dropbox.lumapix.com/?f590-6909-dd98>

After opening the website, click on "Add Images" in the upper right corner. This will open your browser and you may choose images from your computer. To select multiple images, hold the control key while clicking on files.

Please call Cindy Bacher, Yearbook Chairperson, if you have any questions at 303-838-9010 or email ybook@wjepta.org.

Yearbooks may be purchased through **February 24th** by sending a check to the school office for \$20 made out to WJE PTA .

Pictures should be sent ASAP as the deadline for the yearbook is **Friday, February 17th**.

Thank You

to all of WJE PTA's Business Partners for their Support!

Ameriprise Financial

303.697.0274, amy.s.knapp@ampf.com, www.ameriprise.com
26267 Conifer Road, Conifer

Crossroads School of Music

303.810.1828, Evergreen/Conifer,
www.crossroadsschoolofmusic.net
*One month of lessons (4 lessons) at 1/2 price.

Haley's Closet

303.816.9757, haleysclosetconsignment@gmail.com
haleysclosetconifer.com
25797 Conifer Road, Suite C-100, Conifer

Kid Central, After School Care

303.697.9125, KidCentral@live.com, www.kidcentralinc.com
19423 North Turkey Creek Road, Morrison

Little Britches Boutique

303.838.8360, www.Littlebritchesboutique.net
25797 Conifer Road, Suite C-100, Conifer

Paragon Martial Arts

303.838.8533, www.ParagonMartialArts.com
26367 Conifer Road, Conifer
* 4 weeks for \$49 introductory program!

If you are interested in becoming a WJE PTA Business Partner, please visit our website or contact Kelli Silvernale at 303.816.9619



Can you afford to retire?

Call me today at (303) 697.0274.

Amy Suzanne Knapp
Financial Advisor

26267 Conifer Rd
Po Box 586
Conifer, CO 80433
303-697-0274

amy.s.knapp@ampf.com

Ameriprise Financial Services, Inc. Member FINRA

WJE PEAKS AFTER SCHOOL OPPORTUNITIES

Winter 2012

Class Offerings

Space Chase

This is an exciting hands-on, minds-on outer space adventure where kids get to try and track down an alien mad scientist determined to turn off the Sun. It's non-stop fun and learning as they test out their spaceship and rover piloting skills and put on their space detective hats to try and figure out how to catch this crafty extraterrestrial.

Space Time Kids, 720.851.7700
 Tuesdays, Feb 21-Mar 20, 3:40-4:40pm
 Room #14, Science Room
 \$60 for 5 classes

Pottery Painting—Go Paint!

Come paint your very own ceramics with Lisa of Evergreen's Go Paint! We will be creating a beautiful Spring/Mother's Day Pot & Saucer. Items are baked and returned to children the following week.

Go Paint, 303.679.3089
 Monday, Apr 23, 3:40-4:40pm
 Art Room
 \$26 for class, paint, Pot & Saucer

Paragon Martial Arts (Offsite)

26367 Conifer Road, Unit D, next to the Wing Wagon
 Students receive 4 weeks (up to 12 classes) of martial arts instruction from nationally certified ATA instructors. Confidence, self control and self defense techniques are taught in a fun positive atmosphere. Parent participation is encouraged but not required.

Ages 4-6, Mon, Tues, and Thurs at 5:00pm
 Ages 6-12, Mon, Thurs at 5:30pm, and Sat at 9:00am
 Cost \$55 -100% of proceeds go to WJE PTA with mention of this promotion
 Call Paragon directly to register, 303.838.8533

Please complete the registration and return to the main office or your classroom teacher. If you have any questions, or suggestions for classes, please contact Carri Robinson, 303.838.3830, CarriRobinson@q.com.

WJE PEAKS: Winter 2012

Because all PEAKS classes are limited in size, please be sure to register ASAP to get the classes you want.

To register:

- Detach and fill out this form and write a check made payable to "WJE PTA" for the total amount due for class registration.
- Return this form to the office or child's teacher.
- Have your child go to class on the first day scheduled and thereafter. ENJOY!
- You will be contacted and your cost refunded if the class you register for does not attain the minimum registration numbers.

Student's Name _____

Grade _____ Teacher _____

Parent/Guardian _____

Phone _____

Email _____

Class Name	Cost
_____	_____
_____	_____
Total (check payable to WJE PTA)	

Parent: I have read and discussed the course description, objective, and criteria for participation with my child. I believe she/he has the skills and time/task commitment necessary for the successful completion of this class. I agree that transportation is my responsibility and I will be on time to pick my child up after class. Contact information will be shared with class instructor for emergency purposes only.

Liability Waiver: I understand that WJE insurance does not cover any type or form of injury to students participating in this program. My family medical policy would cover expenses incurred in the event of injury to my child or injury to others caused by my child. I hereby acknowledge the foregoing and release and indemnify West Jefferson Elementary School and its PTA of any liability arising from any aspect of my child's participation in this program.

 Parent permission signature

Student: I understand that I am expected to conduct myself in a responsible manner during all times in class.

 Student commitment signature

PROJECT INSPIRE

SUMMIT OUTFITTERS' LAB (SIED CENTER PROGRAM)

Helping the Poor People.

We need to keep others safe and warm. There are also people out there that need stuff that we have. They need blankets, coats and socks. By working together we can collect a lot and share what we collect with people who don't have anything. Twelve thousand people in Denver are homeless.

We will be collecting good quality new or used blankets, coats, and socks at a table in the school. If you bring something, you can add a quilt square to our poster and help our world. We will be collecting coats and blankets from Monday, January 30 through Thursday, February 16.

Thank you for helping with our project!

Daniel Tackett, Aiden Rupe, Skyler Enix, Quinn Henry, Sebastian Wanken, and CJ Zenisek



HELP OUR LIBRARY!

Our library can use your help! Along with other tasks in the library, we are being overwhelmed with returned books. If you have just 30 minutes to stop by the library and put books back on the shelf anytime of day and as often as possible. Once a week? Once a month? We'll take it!

In addition, the **Adopt a Shelf** program is still available and could use your expertise. Books get mixed up easily when students are looking for their 'just right' book and then we can't find the book if it was put back on the shelf in the wrong place. Having your help to get books in their correct location can save teachers and students hours of valuable learning time.

Please contact Wendy Bittner or Julie Job with questions. Or just stop by anytime!



Colorado Taekwondo Institute



303.838.2783
Aspen Park Village
Above Papa Murphys

1st ten new students to enroll receive \$50 of Free Equipment!

Call to reserve your spot!

Classes are taught by:
James M. Sautel, 7th dan
Merinda J. Sautel, 6th dan
Karissa M. Mowry, 4th dan

Educational Moo Sul Kwan Self-Defense for adults and juniors!

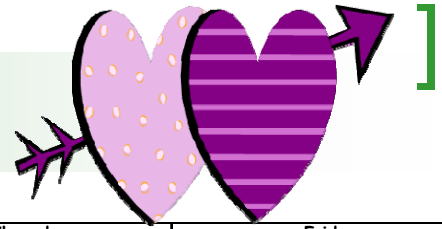
www.ColoradoTaekwondo.com

WJE Spring Fling is Coming! April 2012

We will begin planning and coordination of the annual spring fling. A planning meeting will be set up in the near future. Any students, parents or staff interested in helping with the planning of this fun school event should contact Sara Hornfeck at 303.886.8499, sarah@ronanddesigngroup.com



WEST JEFF ELEMENTARY LUNCH MENU FEBRUARY 2012



Monday	Tuesday	Wednesday	Thursday	Friday
January 30 Cheeseburger/Hamburger or Cold Cut Combo Sandwich or Entrée Salad	31 Bean & Cheese Burrito or Corn Dog or Turkey & Cheese Sandwich Cookie	February 1 Mac & Cheese or "Back Pack Lunch" (Seeds, Muffin, and Yogurt) or Entrée Salad	2 Turkey & Gravy or Galaxy Cheese Pizza or Ham & Cheese Wrap	3 French Toast w/ Sausage or Chicken Quesadilla or Entrée Salad
6 Hot Dog w/Chili Cup or Turkey & Cheese Sandwich or Entrée Salad	7 Spaghetti w/Meat Balls or Hot Ham & Cheese on a Bun or Entrée Salad Brownie	8 <i>Colorado Proud Day!</i> Enchilada Casserole or Stuffed Bread Sticks w/Marinara Sauce or "Back Pack Lunch" (Seeds, Muffin and Yogurt)	9 Chicken Nuggets or Crispy Chicken Wrap or Sun Butter & Jelly Sandwich w/ Cheese Stick	10 <i>Big Daddy Pizza Day!</i> Cheese or Pepperoni Pizza or Cold Cut Combo Sandwich or Entrée Salad
13 Cheeseburger/Hamburger or Cold Cut Combo Sandwich or Entrée Salad	14 Bean & Cheese Burrito or Corn Dog or Turkey & Cheese Sandwich Cookie	15 Grilled Cheese Sandwich or Cheese Stuffed Shells or Entrée Salad	16 Teriyaki Chicken w/Rice or Galaxy Cheese Pizza or Sun Butter & Jelly Sandwich w/ Cheese Stick	17 No School 
20 President's Day  No School	21 Beef Ravioli or Beefy Nachos or Turkey & Cheese Sandwich Sherbet Cup	22 Citrus Crusted Fish Fillet or Hot Dog on a Bun or Entrée Salad	23 Crispy Breaded Chicken or Sloppy Joe on Bun or "Back Pack Lunch" (Seeds, Muffin and Yogurt)	24 <i>Big Daddy Pizza Day!</i> Cheese or Pepperoni Pizza or Sun Butter & Jelly Sandwich w/ Cheese Stick or Entrée Salad
27 Cheeseburger/Hamburger or Cold Cut Combo Sandwich or Entrée Salad	28 Bean & Cheese Burrito or Corn Dog or Turkey & Cheese Sandwich Cookie	29 Mac & Cheese or Ham & Cheese Wrap or Entrée Salad	Student Lunch Price - \$2.50, Adults \$3.50, Milk \$ 0.50, Water/Juice \$ 0.25  Meal Pay - Manage your child's school lunch account on the Internet by logging on to www.mealpay.com or phone 1.866.609.0949	

Lunch includes an entrée and a choice of sides. Milk is offered daily at lunch. Menus are nutritionally balanced with a wide variety of healthy selections including fruits and vegetables. Nutritional information is available on the website at jeffco.publicschools.org

Menus are Subject to Change without notice due to price and product availability. For the most accurate lunch menu offerings, please call the lunch line at 303.982.2950, option 4.

Employment Opportunities

Looking for the perfect P/T job? 2-6 hours/day, Advancement opportunities

Call
303.982.6747

HAMBURGER ALTERNATIVES



America is famous for the hamburger piled tall with toppings and slapped between a bun. Some burgers even come topped with fried onion rings, French fries or a fried egg. Here are a few healthier alternatives to the traditional burger that still offer great taste:

- Vegetable-based burgers: bean, mushroom or lentil burgers
- Imitation meat burgers: soy or wheat protein (tofu or tempeh burgers)
- Lean, ground turkey or chicken burgers

Any of these burgers can be "doctored up" with low-fat dressing and your favorite vegetable toppings. Try serving them on a whole-grain bun for an added nutritional boost.